



MWDC

Mine Warfare Data Center



- Mine warfare data base management
- Operation planning and tasking
- Mine threat evaluation
- Data exploitation and operation follow-up

***MWDC is a core system,
that benefits both MW authority and MWMV's by:***



- Updating the seabed and water environmental conditions
- Optimizing the employment of MCMV's
- Offering the OPCOM a complete view of MCM OPS
- Improving tactical MW operational training.

MWDC

Mine Warfare Data Center



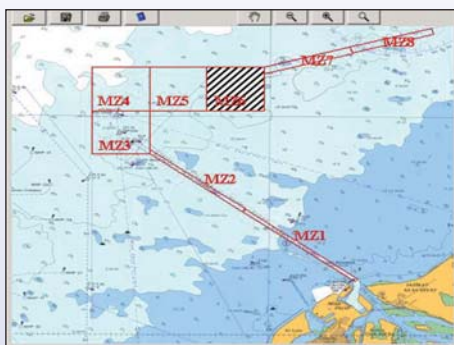
Cartographic data management

- . Operations area
- . Raster & vectors maps visualization
- . GIS (Geographical Information System) integrated
- . Environmental data processing & display



Mine threat evaluation and operation

- . MW mission definition & time scale control
- . Post-mission data retrieval & data base reporting
- . MW statistical mission analysis
- . Tactical mine situation synthesis & transmission to naval HQ



The system integrates

- . Maritime, hydrographic, geographic data
- . Technical capabilities of mines and MCM equipment
- . Tactical situation in order to establish MCM directives, orders and sitrep
- . Automatic formatted message handling & visualization for MW activities
- . Logistics support



Software architecture & interfaces

- . Windows O/S, COBRA architecture (EJB middleware), JAVA
- . ORACLE 8 database management
- . COTS GIS implementation
- . S57 Electronic maps
- . Formatted NATO messages ACP 127 type through dedicated IRIS® product
- . Magnetic tapes, RW CD, diskette, IP channel data transmission

The MWDC is designed

- . To be realized step by step, from a basic data bank center to a complete, integrated command system,
- . To take account of customer command and control organization,
- . To respect hierarchical levels and confidential access rights,
- . To be compatible with computing standards by use of existing hardware and software.

ECA reserves the right to vary the specifications and details contained in this publication